

Mud Sucker®  
Diaphragm Pumps

## 3FA-EC Series

Heavy Duty  
Diaphragm Pumps

3FA-EC™  
3FA-EC-C™

### FEATURES

3" Connection size

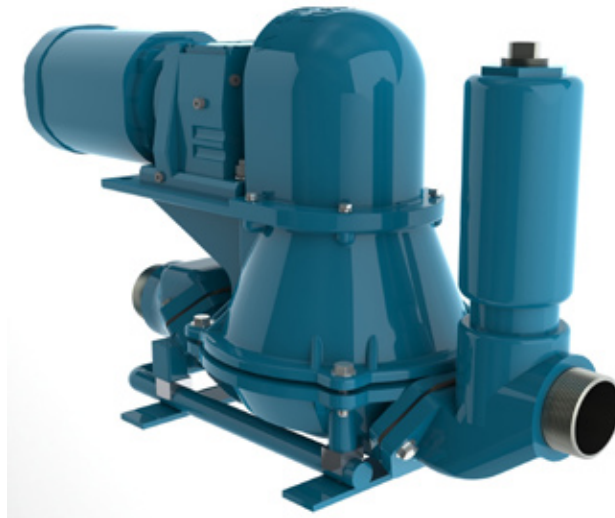
Pump up to 80 GPM

Transfer spherical solids up to  
2 1/4" or 50% by volume

Pump up to 50' vertical or 300'  
horizontal

13" heavy duty diaphragm

Multiple drive options and  
industry specific components

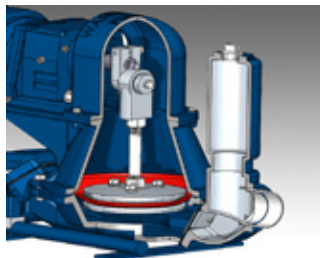


  
**WASTECORP.**  
Pumps®

## Use Less Energy. Pump More Productively. The 3FA Series Can Help You Do It.

When food processors, oil companies, pulp and paper mills and farms challenged us to design a heavy duty 3" diaphragm pump that could adapt to the changing demands of their industries, Wastecorp engineered the new Mud Sucker 3FA Series. We developed the exclusive **Contoured Velocity Channel** which aids in moving tough fluids through the pump body and enhancing overall performance. We worked with leading chemical companies to offer high wear components like Santoprene® diaphragms and fabric reinforced flapper valves. This helps to move tough fluids while reducing downtime for maintenance. With every innovation, we move diaphragm pump technology forward because our customers demand it.

### Make Pumping Tough Fluids Easier



#### EXCLUSIVE CONTOURED VELOCITY CHANNEL

Only with Mud Sucker pumps do you get an industry exclusive velocity channel that enhance the flow of fluids and reduces the chance for clogging



#### MULTIPLE DRIVE OPTIONS

We understand the needs of your industry that's why we offer several high performance drives from the industry's leading manufacturers including Siemens, SEW, Yanmar, John Deere and more.



#### CONFIGURED FOR YOUR FACILITY

With custom mounting systems available and your choice of in line or standard piping systems, you get a pump designed for your facility.

### WHAT THIS MEANS TO YOU.

The pump adapts to your unique fluid handling environment. Experience increased productivity and less downtime.

Get the explosion proof, variable speed, single or three phase drive that works best for you.

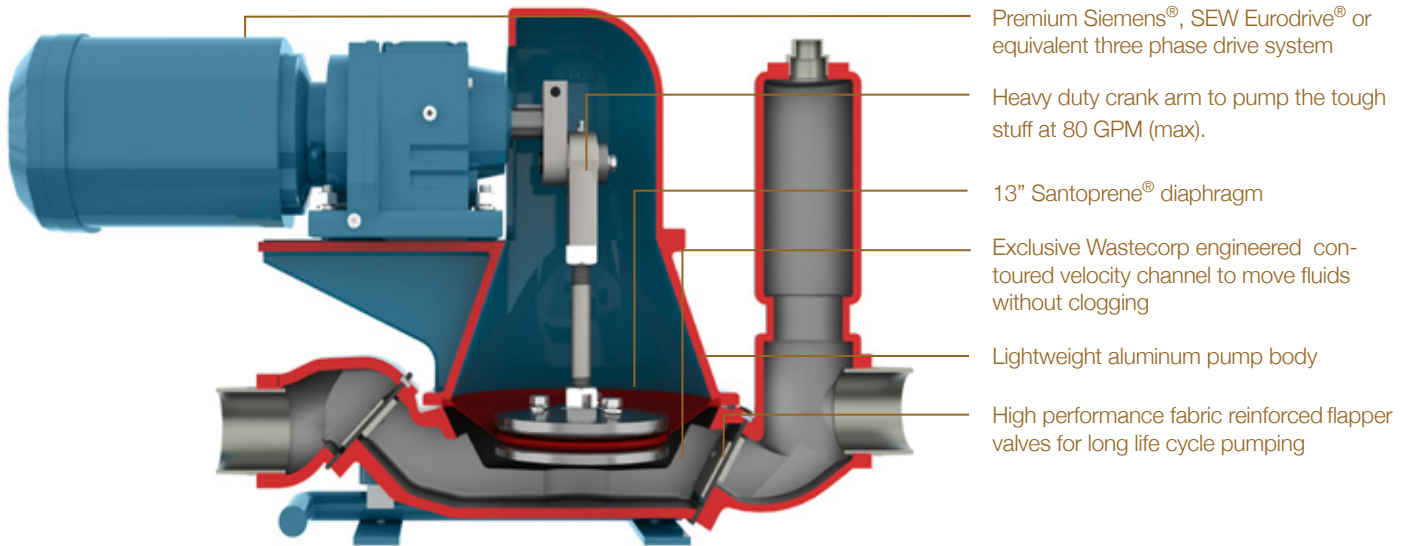
Get solutions for tight spaces, piping arrangements and industry specific components that you need to get the job done right the first time.

MUD SUCKER® DIAPHRAGM PUMPS THE PUMP WITH ATTITUDE.

[wastecorp.com](http://wastecorp.com)

Santoprene is a registered trademark of ExxonMobil Corporation.

## Mud Sucker® Diaphragm Pumps



- Premium Siemens®, SEW Eurodrive® or equivalent three phase drive system
- Heavy duty crank arm to pump the tough stuff at 80 GPM (max).
- 13" Santoprene® diaphragm
- Exclusive Wastecorp engineered contoured velocity channel to move fluids without clogging
- Lightweight aluminum pump body
- High performance fabric reinforced flapper valves for long life cycle pumping

Manufactured in North America. Country/region specific models are available worldwide.

### Performance Range

Max. capacity	80 GPM
Max. suction lift	25' vertical or 75' horizontal
Max. discharge head	50' vertical or 300' horizontal
Solids handling	2.250" dia or 50% by volume

### Pump and Motor Specifications

Suction inlet/outlet size	3"x3" (female threaded)
Max. liquid temperature	140 °F (60 °C) continuous*
Pump body casing	Marine grade aluminum (ASTM A356, Class 30)
Diaphragm	13" dia TPE Santoprene® Severe duty
Flapper valves	Fabric reinforced Buna-N (viton optional)
Gearbox	SEW Eurodrive model R57 cast iron with heat treated gears
Hardware	Zinc coated
Rod end bearing body	Cast iron, protective coated for corrosion resistance
Ball bearing	Sintered steel, heat treated, oil impregnated
Ultimate radial static load capacity	9,000 Lbs
Motor specification	3 hp, 1800 RPM, 3 phase; 60 Hz; 230/460V; TEFC enclosure

\* Consult factory if fluid temperature exceeds 140 °F

### Popular 3FA Series Applications

- Passed Chemical Sludge
- Lime Slurry
- Waste Oil Sludge
- Fiberboard Filler
- Raw Latex
- Clay Slurries
- Cruise Ship Wastes
- Food Processing Waste (pork, cattle, fish, fruit, vegetable, dairy, poultry)
- Paper Pump Transfer
- Explosive Jelly
- Paint Transfer
- Polymer Transfer
- Ship Bilge Transfer
- Metal Slurry Transfer
- Holding Tank Transfer
- Coal Slurry
- Hog Fat
- Chemical Filler Materials
- Chocolate Waste Product Transfer
- Portable Trash/Clean-up
- Sludge Recovery (tanker mounted units)
- Ferric Chloride
- Mobile Dewatering
- Feed Pump
- Lagoon Cleaning
- Golf Courses
- Harbor Pumps
- Federal/Military
- Railroad Tanker Cleaning
- Thickened Sludge Transfer
- Scum Feed Pumps
- Portable Clean-up Pump Sets
- Centrifuge Feed Pumps
- Lime Slurry Transfer
- Lagoon Dredging
- Septage Transfer
- State/Federal Parks & Recreation
- Emergency Management Response



**WASTECORP.**  
**Pumps®**

**OEM Manufacturer**

## Mud Sucker® Diaphragm Pumps

Toll-Free: 1.888.829.2783 Email: [info@wastecorp.com](mailto:info@wastecorp.com)

Mud Sucker 3FA Series pumps are specified for the following industries and applications: agricultural, aquaculture farming, farms, food processing, oil, gas, shale, select chemicals, pulp and paper mills, marine pumping applications, waste oil pumping, landfills, dewatering, biodiesel production and others. Mention your application to your technical support representative at the time of order. Before operating your diaphragm pump, read, understand and follow all instructions in the manual and on the pump. Specifications and programs are accurate at the time of publication but subject to change without notice. Images may not reflect dealer inventory and/or unit specifications. Wastecorp, Mud Sucker and globes are trademarks of Wastecorp, WPCI Environmental Brands. No reproduction of this document without permission. © Wastecorp.



# ATTACHMENTS

Enhanced pump out productivity with your Mud Sucker can be as easy as adding a few simple accessories. So if you need to suck up dirt and debris, need a mess free pump out, or have a heavier duty dewatering application, the right accessories can enhance your fluid handling one step further.



## GULPER

Take control of your waste clean up with the Gulper suction tool. Fits any Mud Sucker FA Series pump and includes a back flow stop device preventing mess.



## ROLL CAGE

If your 3FA will travel to multiple job sites the lightweight roll cage increases safety and pump protection



## WHEEL KIT

Take your Mud Sucker mobile with heavy duty, light weight wheel kits.



## DISCHARGE HOSE

Available in premium brown or blue in various lengths.



## SUCTION HOSE

Crush proof hosing available for industry specific applications (includes couplings). Variety of lengths available.



## COUPLINGS

Male and female couplings to attach your Mud Sucker to virtually any hose or pump out system.



## STRAINERS

Industry and application specific strainers available in over 100 models.



## PUMP STATIONS

Multi unit pump stations for multiple processes.



## CONTROL PANELS

Complete packaged pump control panel systems for a variety of applications.