

HPE-9™ Series

SEVERE DUTY PLUNGER PUMPS

DIRECT DRIVE

HPE-941™

HPE-942™

HPE-943™

HPE-944™

FEATURES

Transfer up to 378 GPM

Head levels up to 240'

160,000 psi strength shafts

Replaceable bronze insert
for lower cost parts

Leak resistant design with
Plunger Pac™ standard

CUSTOMER SUPPORT

North America

1-888-829-2783

International

+1-201-445-2882

Email

techsupport@wastecorp.com

wastecorp.com



WASTECORP.
PLUNGER PUMPS
OEM MANUFACTURER

THICKENED SLUDGE. PRIMARY SEWAGE. THE HPE-9 PUMPS IT ALL.

The severe duty HPE-9 Series is specified for municipal and industrial sewage, sludge, food processing waste and much more. This pump series is available with single ball valve or double ball valve configurations for pumping higher percentages of solids.

With the HPE-9 your facility can pump up to 378 GPM with your choice of direct drive or belt driven arrangements. Wastecorp also offers leak resistant packing systems, guided plunger assemblies for less component wear and gauges to help protect your pump.

General Specifications	Simplex HPE-941	Duplex HPE-942	Triplex HPE-943	Quadruplex HPE-944
Number of plungers	1	2	3	4
Plunger dia. (in)	9			
Air chambers	(2) 9"x30"			
Flanged connections	4" ANSI 125 #	4" ANSI 125 #	6" ANSI 125 #	6" ANSI 125 #
Driver speed, RPM	1800			
Number of pin positions	11			
Max. strokes per min.	50			
Max. stroke length (in)	7.25			
Max. rec. suction lift (ft)	20			
Max. total head (ft)	240			
Max. capacity (GPM)	95	187	278	378
Eccentric dia. (in)	12			
Eccentric shaft tensile strength (PSI)	160,000			

Recommended Spare Parts

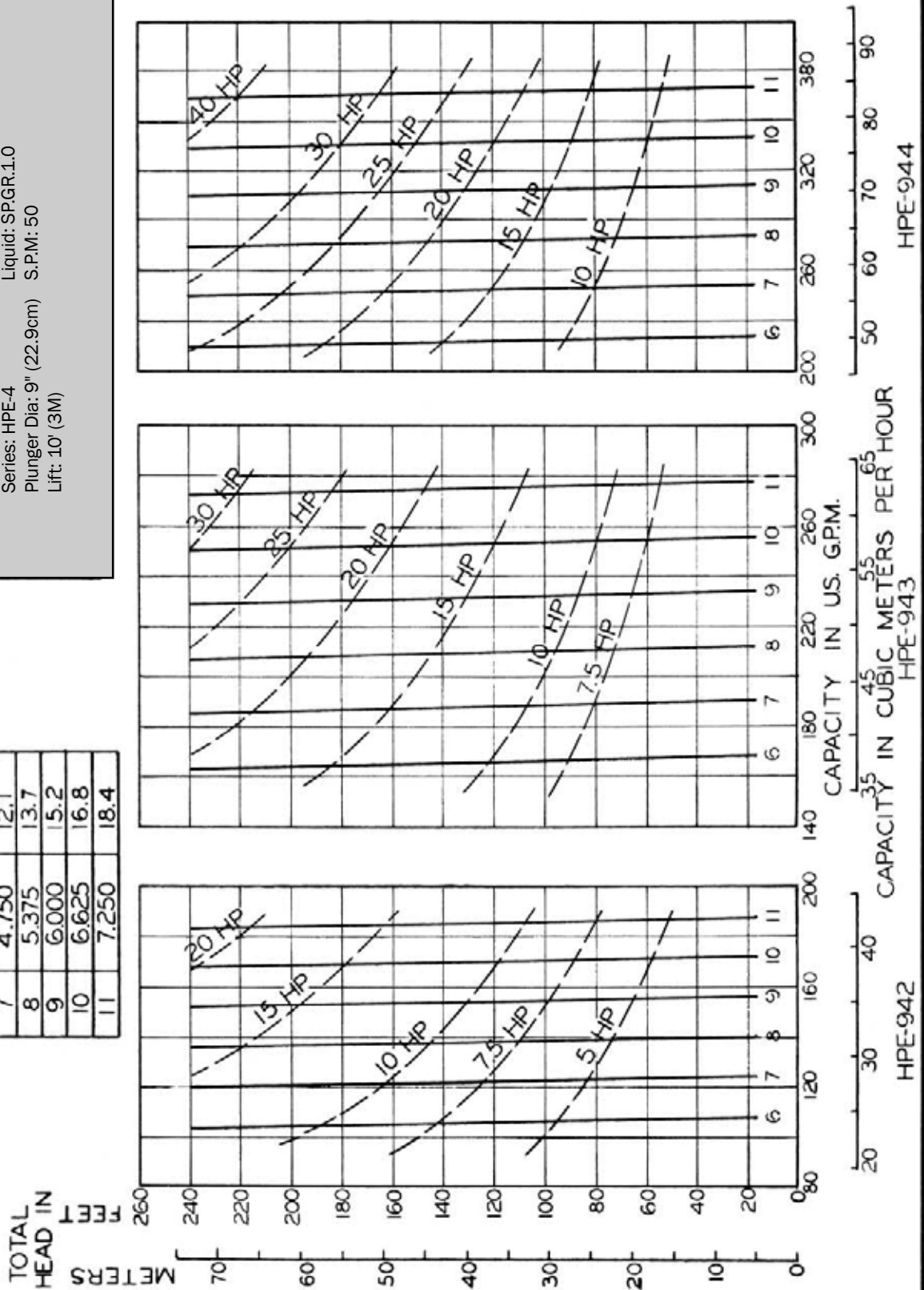
Index shear pin	60795-00
Ball valve	33956-00
Bushing (bronze)	36453-00
Connecting insert	46726-00
Plunger 9"	15041-02

Pump Component	Standard Material	Optional Material
MAINSHAFT	A4140/4142 High-Strength Alloy Steel	
ECCENTRIC	ASTM A48, Class 35 Grey Iron	
LUBRICATION	Manual Sight Feed Oiler, 5 oz	a) Automatic ball-type oiler with needle valve (5 oz), b) Electric Solenoid Oiler, c) Mechanical Force Feed Lubricator
DRIVEN/DRIVE FLANGES	ASTM A48, Class 35 Grey Iron	
BUSHING, SHEAR PIN	Hardened Steel	
SHEAR PIN	Fabricated Cold Rolled Steel	
CONNECTING ROD	ASTM A48, Class 35 Grey Iron	ASTM A536 Grade 65-45-12 Ductile Iron
ECCENTRIC BEARING LINER	Replaceable, Bronze SAE 660	
BUSHING, WRIST PIN	SAE 941 Oil-Lite Bronze	
WRIST PIN	A4140/4142 High-Strength Alloy Steel	
VALVE SEAT	ASTM A48, Class 35 Grey Iron	Bronze Alloy, 316 Stainless Steel
BALL VALVE	5-1/8" Urethane Rubber with Centralized Iron Core	
PLUNGER	ASTM A48, Class 35 Grey Iron	ASTM A536 Grade 65-45-12 Ductile Iron
OPTIONAL PLUNGER COATINGS	PUMP BODY	Coatings Available: a) Chrome Oxide, b) Aluminum Oxide, c) Tungsten Carbide, d) Hastelloy C, e) Stainless Steel
STUFFING BOX	ASTM A48, Class 35 Grey Iron	
GLAND	ASTM A48, Class 35 Grey Iron	
FLANGE CONNECTION	4" ANSI 125 lb (Simplex and Duplex Pumps) 6" ANSI 150 lb (Triplex and Quadruplex Pumps)	
SAMPLING DRAIN VALVE	2" Brass Ball Valve on Discharge	2" Brass Ball Valve on Suction 1" Capped Hose Valve on Suction
AIR CHAMBER	A53 Seamless Steel Pipe, Anodized/Galvanized with ¼" brass air release valve/petcock	304 or 316 Stainless Steel
PACKING	½" sq. Graphite Impregnated Braided with Polyurethane seal	a) Graphite Rings Only, b) Chevron Rings Only, c) Combo (Graphite/Chevron), d) Plunger Pac (Chevron, Teflon and Poly-urethane seal)
PUMP BASE	Fabricated heavy-duty steel channel and tube base plate and pedestals with drip gutters and 1" drain connections	
DRIVE ARRANGEMENT	Constant Speed, Helical horizontal Gearmotor coupled to pump's mainshaft, Max. Output Speed: 50 RPM	a) Constant Speed, Helical Shaft-Mounted vertical Gearmotor (vertical), b) V-Belt/Gear/Pulley System, c) Mechanical Variable Speed Drives, d) Variable Frequency Drives, e) Others – Contact Wastecorp
DRIVE COUPLING	Flexible Grid-Type	a) Disc Coupling, b) Elastomer Coupling, c) Others – Contact Wastecorp

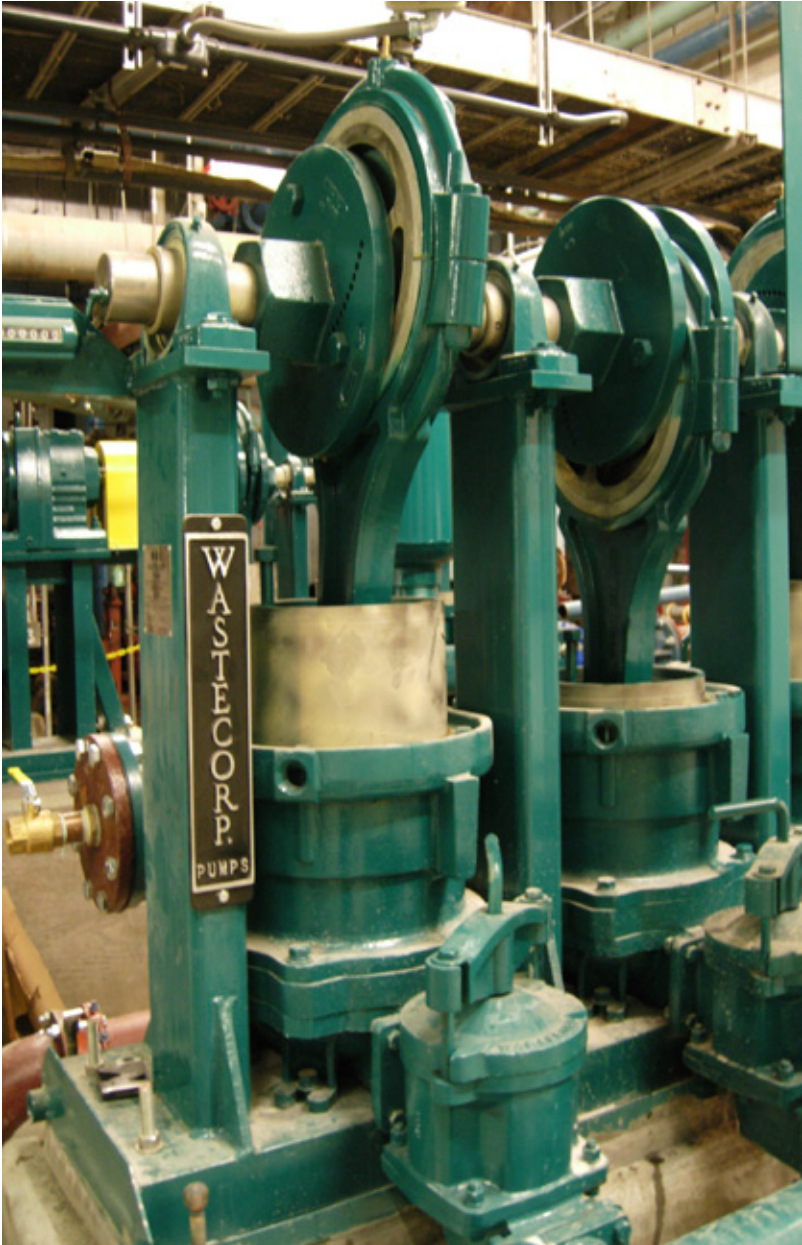
PE-SERIES PLUNGER PUMPS

ENGINEERED BY WASTECORP. PUMPS
 Series: HPE-4 Liquid: SP,GR,1.0
 Plunger Dia: 9" (22.9cm) S.P.M: 50
 Lift: 10' (3M)

PIN POS.	STROKE LENGTH	
	INCHES	CM
6	4.125	10.5
7	4.750	12.1
8	5.375	13.7
9	6.000	15.2
10	6.625	16.8
11	7.250	18.4



Wastecorp reserves the right to make changes in materials, design specifications and price without notice. Not for construction purposes.

HPE-9™ Series**SEVERE DUTY
PLUNGER PUMPS****Wastecorp Sludge Master®
Plunger Pumps****Wastecorp® Plunger Pumps**Toll-Free
1.888.829.2783E-mail
info@wastecorp.comInternational
+1-201-445-2882

**WASTECORP.
PLUNGER PUMPS**
OEM MANUFACTURER

The pump depictions are not meant to be used or relied upon as a substitute for the safety and use information that is published in the respective operator's manual. Before operating your plunger pump, read, understand and follow all instructions in the manual and on the pump. Specifications and programs are subject to change without notice. Images may not reflect dealer inventory and/or unit specifications. Wastecorp, PE Series, HPE Series Space Saver, Sludge Master and globes are trademarks of Wastecorp, WPCI Environmental Brands. No reproduction of this document without permission. © Wastecorp.