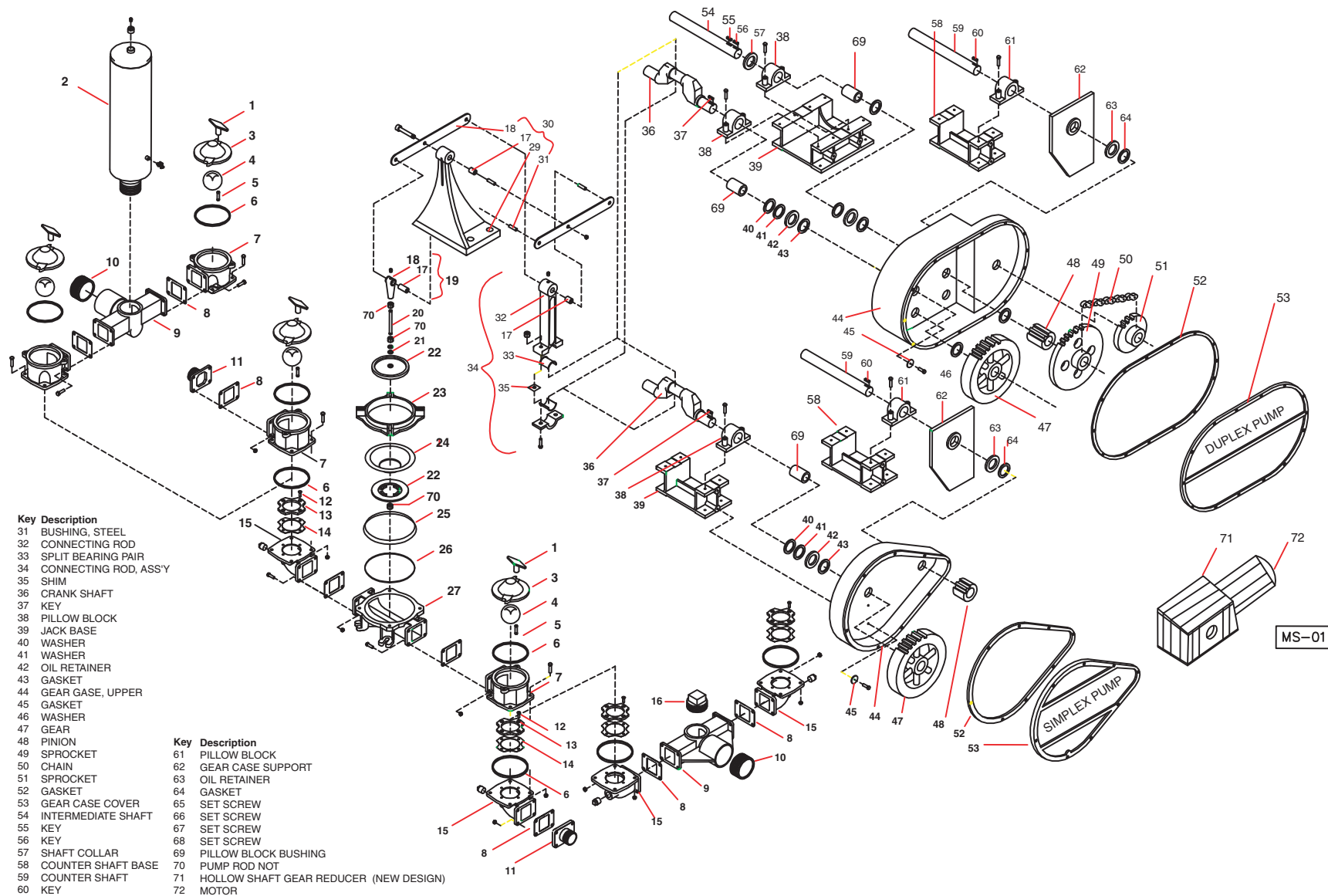




WASTECORP.

WASTECORP. Miscellaneous Diaphragm Pump Schematic

EXPLODED PUMP VIEW



Key	Description
1	HAND KNOB
2	AIR CHAMBER
3	VALVE COVER
4	BALL VALVE
5	STUD
6	GASKET
7	VALVE CHAMBER
8	GASKET
9	MANIFOLD TEE
10	NIPPLE
11	Suction/ Disch. Fitting
12	MACHINE SCREW
13	VALVE SEAT
14	GASKET
15	ELBOW
16	PIPE PLUG
17	BUSHING, BRONZE
18	PUMP ROD END
19	Pump Rod End, Assy
20	PUMP ROD
21	GASKET
22	CLAMPING PLATES
23	CLAMPING RING
24	DIAPHRAGM
25	ADAPTER RING
26	GASKET
27	PUMP BODY
28	WALKING BEAM
29	FULCRUM POST
30	Fulcrum Post Assy

Key	Description
31	BUSHING, STEEL
32	CONNECTING ROD
33	SPLIT BEARING PAIR
34	CONNECTING ROD, ASSY
35	SHIM
36	CRANK SHAFT
37	KEY
38	PILLOW BLOCK
39	JACK BASE
40	WASHER
41	WASHER
42	OIL RETAINER
43	GASKET
44	GEAR GASE, UPPER
45	GASKET
46	WASHER
47	GEAR
48	PINION
49	SPROCKET
50	CHAIN
51	SPROCKET
52	GASKET
53	GEAR CASE COVER
54	INTERMEDIATE SHAFT
55	KEY
56	KEY
57	SHAFT COLLAR
58	COUNTER SHAFT BASE
59	COUNTER SHAFT
60	KEY

Key	Description
61	PILLOW BLOCK
62	GEAR CASE SUPPORT
63	OIL RETAINER
64	GASKET
65	SET SCREW
66	SET SCREW
67	SET SCREW
68	SET SCREW
69	PILLOW BLOCK BUSHING
70	PUMP ROD NOT
71	HOLLOW SHAFT GEAR REDUCER (NEW DESIGN)
72	MOTOR

MS-01

? For immediate technical support call:
 North America: 1.888.829.2783
 Worldwide: 201.445.2882