

**TRASH FLOW®**  
SELF PRIMING TRASH PUMPS  
**TFCC-10™**



# HEAVY DUTY PUMP INNOVATION IS ALWAYS SMART.

What's smarter than full impeller access and an easily removable rotating assembly? Having all that pump backed by premium castings and up to 3500 GPM capabilities with up to 135 ft. of head. The TFCC -10, 10" connection is a heavy duty trash pump with innovative components like double floating mechanical seals and solids handling.

**FEATURES**

TRANSFER UP TO 3500 GPM (795 m³)

MAX. HEAD 135 FT (41 m)

PUMP UP TO 3" (76.2 mm) SOLIDS

QUICK SELF PRIMING CAPABILITIES

HEAVY DUTY BEARINGS AND CASTINGS

EASILY REMOVABLE ROTATING ASSEMBLY

FULL IMPELLER ACCESS

SOLIDS HANDLING IMPELLER

DOUBLE FLOATING MECHANICAL SEAL

DUAL LIP SEAL BEARING PROTECTION\*

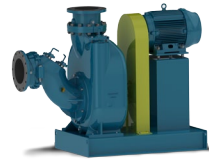
\*optional

**TRASH FLOW® CONFIGURATIONS**

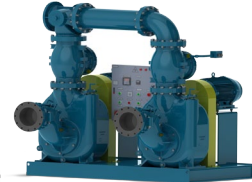
**FLEX COUPLED**



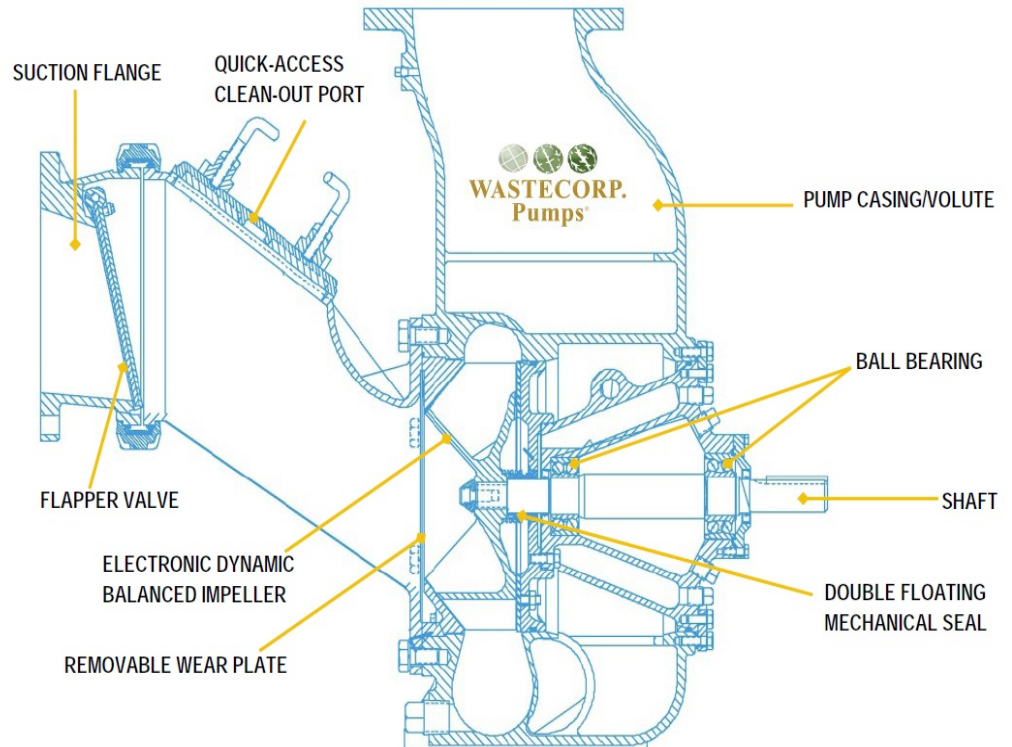
**BELT DRIVE VERTICAL**



**SEWAGE LIFT STATIONS**



**BELT DRIVE PIGGY BACK**

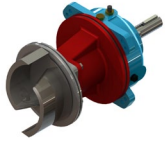


# TRASH FLOW® SELF PRIMING TRASH PUMPS

## TFCC-10™

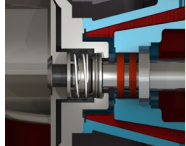


### FEATURES



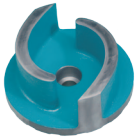
#### REMOVABLE ROTATING ASSEMBLY

Experience less downtime and maintenance hassles with the Trash Flow's removable rotating assembly. The pump volute and piping are not disturbed during maintenance.



#### DOUBLE FLOATING MECHANICAL SEAL

Wastecorp's mechanical seals are designed for the harsh pumping conditions in today's municipal and industrial solids handling jobs.



#### SOLIDS HANDLING IMPELLERS

Trash Flow pumps feature our standard premium two-vane solids handling impellers with solids handling capabilities up to 3" (75mm).



#### OPTIONAL SUCTION AND DISCHARGE GAUGES

Monitor operating pressure easily with Wastecorp's optional suction and discharge gauges.

### OPTIONAL CONFIGURATIONS



#### SEWAGE LIFT STATIONS

Let our pump designers engineer the ultimate lift station for your facility. We offer complete packaged solutions including control panels, valves and more.



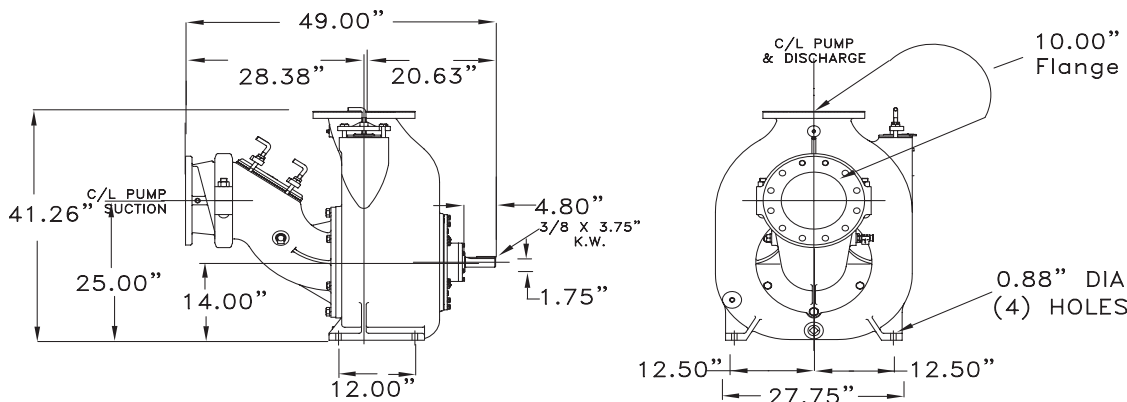
#### TRAILER OR SKID MOUNT ENGINE

With our trailer or skid mounted diesel engine trash pumps, you'll get a DOT approved solutions for mobile wastewater transfer

<b>Pump Size</b>	10" x 10" (250mm x 250mm), Grey Iron, ASTM A48; Class 30
<b>Pump Casing</b>	Grey iron, ASTM A48; Class 30
<b>Operating Pressure</b>	Maximum 99 psi (683 kPa)
<b>Impeller</b>	Max. 14.75" OD, Ductile Iron ASTM A536, Grade 60-40-18
<b>Max. Solids</b>	3" (76 mm)
<b>Max. Temperature</b>	160°F (71°C)
<b>Impeller Shaft</b>	ANSI 4140 steel
<b>Wear Plate, Replaceable</b>	SAE 1020 steel
<b>Removable Cover Plate</b>	Grey Iron, ASTM A48; Class 30
<b>Flapper Valve</b>	Neoprene with internal steel weight
<b>Bearing Housing</b>	Grey Iron, ASTM A48; Class 30 (includes oil sight glass and breather valve)
<b>Seal Plate</b>	Grey Iron, ASTM A48; Class 30
<b>Shaft Sleeve</b>	316 stainless steel
<b>Radial/Thrust Bearing</b>	NSK open ball
<b>Bearing/Seal Cavity Lubrication</b>	SAE No. 30 oil
<b>Gaskets</b>	Buna-N, compressed synthetic fibers, vegetable fiber, PTFE, cork, and rubber
<b>O-Rings</b>	Buna-N Teflon coated
<b>Pressure Release Valve</b>	Brass
<b>Oil Level Sight Gauges</b>	Bearing and seal cavity
<b>Net Weight</b>	1500 lb. (680 kg)
<b>Mechanical Seal:</b>	Double floating cartridge type, titanium tungsten-carbide rotating and stationary faces, 316 SS casing and spring, Viton O-Rings.
<b>Optional Equipment and Materials:</b>	Stainless Steel. Automatic air release valve, 120V/240V casing heater. High pump temperature shutdown kit, moisture probe, gauge kit, NPT & DIN standard suction and discharge flanges. Other elastomers available.

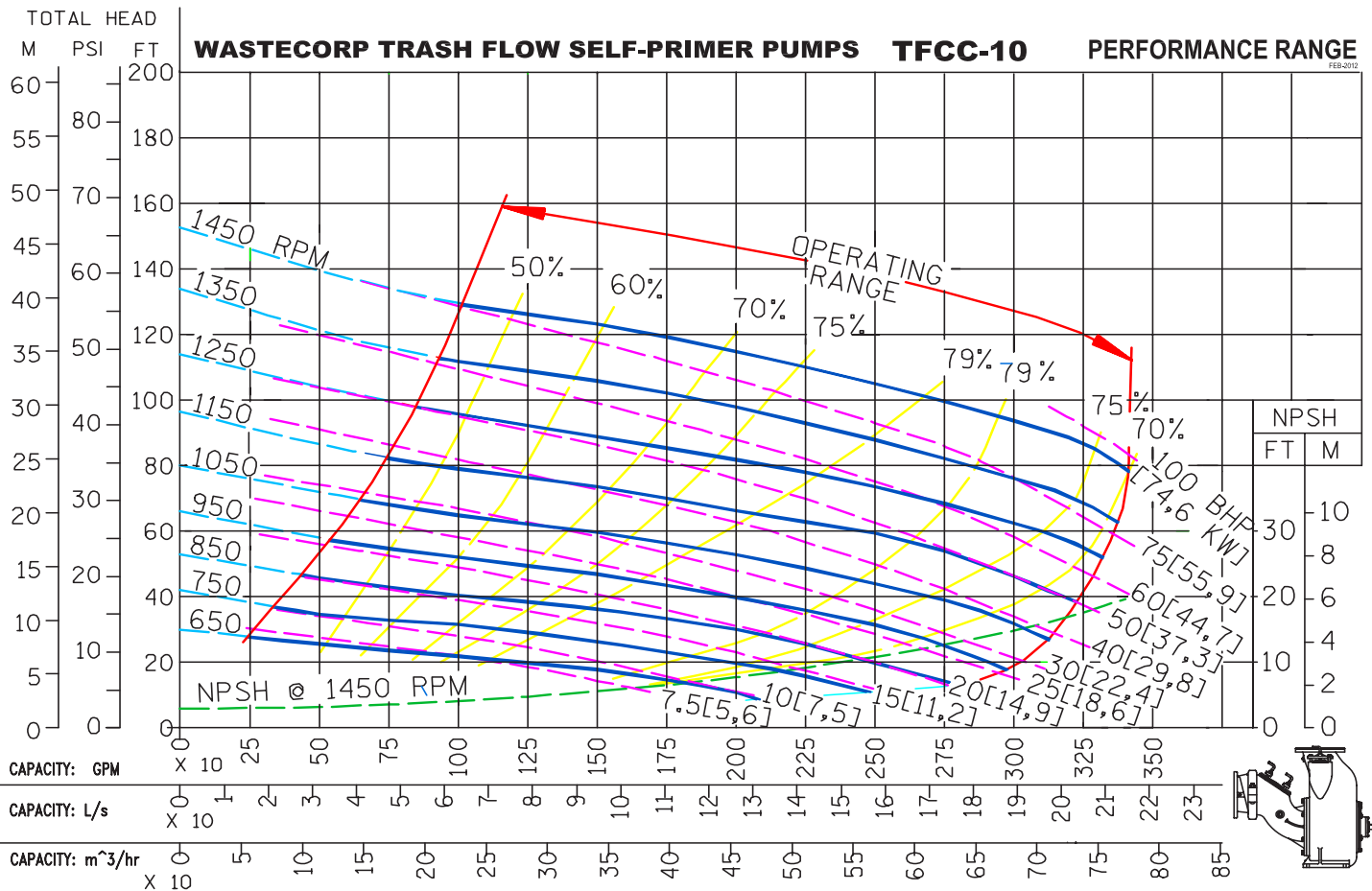
Note: Consult factory for applications exceeding maximum pressure and/or temperature indicated.

### BARE PUMP DIMENSIONS



Dimensions and weight are approximate. Wastecorp Pumps reserves the right to make changes in design, materials and operating ranges without notice.

**TRASH FLOW®**  
SELF PRIMING TRASH PUMPS  
**TFCC-10™**



REPRIMING LIFTS		
PUMP SPEED	PUMP SPEED	PUMP SPEED
650 RPM	7 Ft.	19 Ft.
750 RPM	11 Ft.	22 Ft.
850 RPM	14 Ft.	22 Ft.
950 RPM	17 Ft.	
1050 RPM	18 Ft.	
1150 RPM	18 Ft.	

CURVE NO.: 62923-00    MODEL: TFCC-10  
 SIZE: 10" x 10"    IMPELLER DIA: 14.75"  
 RPM: VARIOUS    SP. GR.: 1.0 @ 68°F

Factory certified tests are performed using Hydraulic Institute acceptance Level B.  
 The performance curve shown were taken from actual tests of standard production pumps, and reflect an average performance of the pumps indicated.  
 Wastecorp reserves the right to make changes in design, materials and operating ranges without notice.

$$BHP = \frac{GPM \times FT \times SG}{3960 \times Efficiency} \quad KW = \frac{M^3 / HR \times M \times SG}{367 \times Efficiency}$$

Suction lift is limited by the available NPSH which is the corrected atmospheric pressure minus the dynamic suction lift, vapor pressure loss and 2 foot safety factor.

**CONSULT FACTORY FOR OPERATING CURVES 1450 RPM AND ABOVE.**



Wastecorp Pumps USA  
 P.O. Box 70  
 Grand Island, New York 14072 | USA  
 Tel: 888.829.2783 | Fax: 888-883-3320  
 sales@wastecorp.com

Wastecorp Pumps Canada Inc.  
 55 Six Point Road  
 Toronto, Ontario M8Z-2X3 | Canada  
 Tel: 416.233.3000 | Fax: 416.233.2300  
 info@wastecorp.com

Wastecorp Pumps International  
 P.O. Box 70  
 Grand Island, New York 14072 | USA  
 Tel: 201.445.2882 | Fax: 201.445.3252  
 techsupport@wastecorp.com